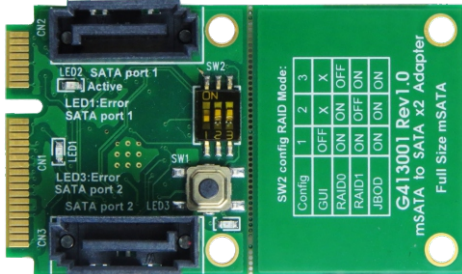
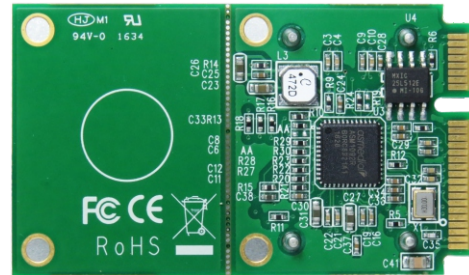


# mSATA 52pin to SATA 7pin x2 RAID Card



Top side



Bottom side

## Features

- ※ Build in ASM1092R high performance processor
- ※ Fully hardware-accelerated RAID Engine
- ※ Supports RAID levels : 0 / 1 / JBOD
- ※ Build in SATA 7-pin connector x2

## Specifications

- ※ Support SATA Reversion 3.2
- ※ Compliant with PCI Express Card Electromechanical Specification Revision 2.0

## mSATA SSD Form Factor Support :

- ※ Full size : 50.95mm (L) x 30mm (W)
- ※ Half size : 26.8mm (L) x 30mm (W)